



Broadcast Antennas & Transmission Systems

SYSTEMS WITH RELIABILITY, LP

619 Industrial Park Road, Ebensburg, PA 15931

Phone 814.472.5436 Fax 814.472.5552 www.swr-rf.com

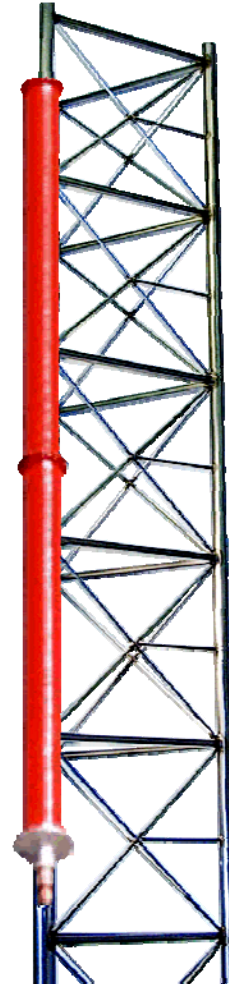
CLARION SD SERIES DTV SIDE MOUNT UHF ANTENNAS

Product Specifications:

Frequency Range	UHF Channels 14-69
Polarization	Circular, Horizontal, Elliptical
Power Rating	100 kW max
System Input	EIA Standard
VSWR	1.1:08 > Across One Channel
Gain	Referenced to Half-Wave Dipole

Features:

- PROVIDES PREMIUM COVERAGE FOR ALL SIDEMOUNT APPLICATIONS.**
- AVAILABLE IN 10 STANDARD HORIZONTAL PATTERNS.**
Custom patterns are also available.
- ANTENNA DESIGNS ON FILE WITH FCC.** Antenna designs on file with the Federal Communications Commission to facilitate the application process.
- BEAM TILT AND NULL FILL STANDARD.** -.75 degrees beam tilt, 10% minimum first null fill.
- PRESSURIZED AND GROUNDED.**
- INPUT FINE MATCHER INCLUDED.**
- WARRANTY.** 2-year limited warranty on defects and workmanship to the original purchaser.



Notes:

1. More than 16 bays will be center fed.
2. SWR, Inc. maintains a continuous program of product improvement and therefore reserves the right to change specifications without notice.



CLARION SD SERIES

DTV SIDE MOUNT UHF ANTENNAS

Electrical and Mechanical Specifications (Typical 30 Bay Reference)

Omni-Directional

Channel	Antenna Aperture (ft)	Radiation Center (ft)	Windload (lbs)	Overturn Moment (ft/lbs)	Weight (lbs)
14	74.4	35.9	6280	224/100	10315
25	65.9	31.7	5220	164/270	8180
36	59.3	28.4	4350	122/380	6135
47	54.0	25.8	3665	93/455	5270
58	49.7	23.6	3110	72/530	4460
69	46.0	21.8	2880	58/330	4030

Cardiod

Channel	Antenna Aperture (ft)	Radiation Center (ft)	Windload (lbs)	Overturn Moment (ft/lbs)	Weight (lbs)
14	74.4	35.9	4050	144/540	12650
25	65.9	31.7	3570	112/200	10320
36	59.3	28.4	2880	81/70	7825
47	54.0	25.8	2330	59/415	6530
58	49.7	23.6	1875	43/735	5180

Typical High Power Azimuth Patterns

