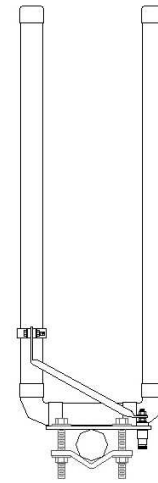




# FMEH PLUS SERIES HORIZONTALLY POLARIZED LOW POWER FM ANTENNAS



## Product Specifications:

<b>Frequency Range</b>	88 – 108 MHz
<b>Polarization</b>	Horizontal
<b>Power Rating</b>	1000 Watts per bay
<b>System Input</b>	Type N Female
<b>VSWR</b>	1.3:1 ± 150 kHz
<b>Bay Dimensions</b>	H 43.50" / W 38.5" / D 19"

## Features:

•**BUILT WITH LOW POWER BROADCASTERS IN MIND.** Stations or translators that require circular, horizontal, or vertical polarizations.

•**POWER RATING.** Each bay is rated at 1000 watts with a maximum power of 5 kW for four bays.

•**RUGGED CONSTRUCTION.** Each bay is constructed from rugged, heavy wall copper and naval brass. All joints are tig-welded.

•**PRESSURIZATION IS NOT REQUIRED.**

•**CUSTOM DIRECTIONAL PATTERNS.** FM directional antennas designed to the customer's specified mounting structure and FCC filing documentation are available.

•**WEATHERIZATION (OPTIONAL).** Radomes or electrical deicers available for areas that experience periods of heavy icing and/or snow conditions.

•**STANDARD MOUNTING BRACKETS.** Fits up to 4" tower leg or pipe. Supplied with antenna.

•**WARRANTY.** 2-year limited warranty on defects and workmanship to the original purchaser.

## Notes:

1. Power rating is based on 40 degrees C ambient. Degeneration occurs above 2000 ft.
2. Antenna weight, windload, aperture and dimensions are based on mid-band operation (98.1 MHz).
3. Antennas with 3 or more bays come with input power divider.
4. SWR, Inc. maintains a continuous program of product improvement and therefore reserves the right to change specifications without notice.

### Full Wave Spaced Electrical and Mechanical Specifications

Bays	Power Rating (watts)	Power Gain	dB Gain	Net. Weight (lbs)	Windload (lbs)
1	1000	0.883	-0.539	15	35
2	2000	1.918	2.828	35	85
3	3000	2.991	4.758	50	120
4	4000	4.088	6.115	65	155
5	5000	5.190	7.152	80	190
6	5000	6.321	8.008	95	225
8	5000	8.622	9.356	110	260
10	5000	10.913	10.379	130	295

### Half Wave Spaced Electrical and Mechanical Specifications

Bays	Power Rating (watts)	Power Gain	dB Gain	Net. Weight (lbs)	Windload (lbs)
1	1000	0.883	-0.539	15	35
2	2000	1.390	1.430	35	85
3	3000	2.025	3.064	50	120
4	4000	2.627	4.195	65	155
5	5000	3.245	5.112	80	190
6	5000	3.847	5.851	95	225
8	5000	5.057	7.039	110	260
10	5000	6.258	7.965	125	295

### 3/4 Wave Spaced Electrical and Mechanical Specifications

Bays	Power Rating (watts)	Power Gain	dB Gain	Net. Weight (lbs)	Windload (lbs)
1	1000	0.883	-0.539	15	35
2	2000	1.870	2.719	35	85
3	3000	2.792	4.460	50	120
4	4000	3.690	5.670	65	155
5	5000	4.603	6.630	80	190
6	5000	5.513	7.414	95	225
8	5000	7.329	8.651	110	260
10	5000	9.180	9.628	125	295