



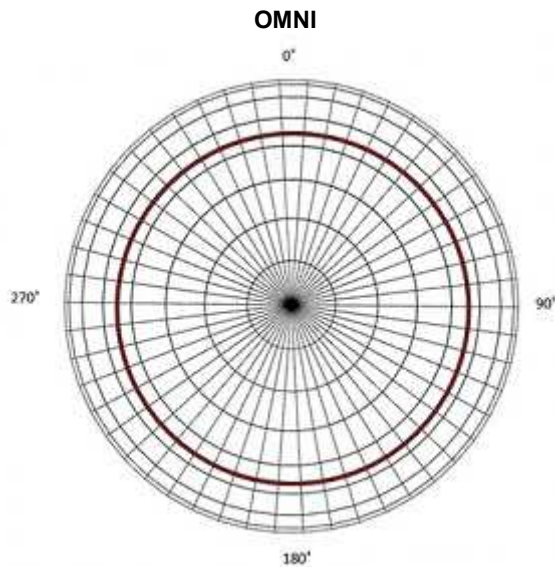
# WRX/4-PLUS MODULAR BROADBAND ANTENNAS

## Product Specifications:

|                        |                   |
|------------------------|-------------------|
| <b>Frequency Range</b> | 160 - 167 MHz     |
| <b>Power Rating</b>    | 1 kW Standard     |
| <b>Power Gain</b>      | 4.2               |
| <b>dB Gain (Omni)</b>  | 6.2 dB            |
| <b>VSWR</b>            | 1.1:1             |
| <b># of Elements</b>   | 4                 |
| <b>System Input</b>    | 7/8" EIA (female) |

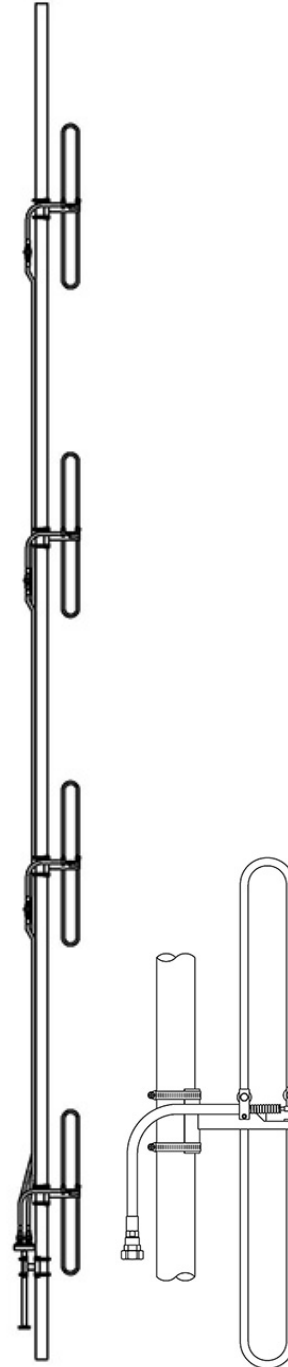
## INCLUDES:

6061 – T6 aluminum radiating elements, power divider, external harness cabling, and stainless steel tower element clamps. Stainless steel tower leg brackets are also available.



## Mechanical Specifications

| Overall Length | Support Mast Diameter | Weight (without brackets) | Mast and Element Material | Windload (all parts including mounting brackets) | Windload with 1/2" Radial Ice |
|----------------|-----------------------|---------------------------|---------------------------|--|-------------------------------|
| 22 ft.         | 2 3/8"                | 44 lbs.                   | 6061-T6 Aluminum          | 191 ft./lbs.                                     | 725 ft./lbs.                  |



## Notes:

1. CaAa per EIA/TIA-222 standard.
2. Windload based on 50/33 psf, EIA/RS-222-C standard.
4. SWR, Inc. maintains a continuous program of product improvement and therefore reserves the right to change specifications without notice.